

Customer :

customer

Customer part :

customer part

Comment :

Comment

S1=4.53

S2=6

Tmax=465

Tp S2=504.0

PI=0.43

HI=96

Sample =1765.30

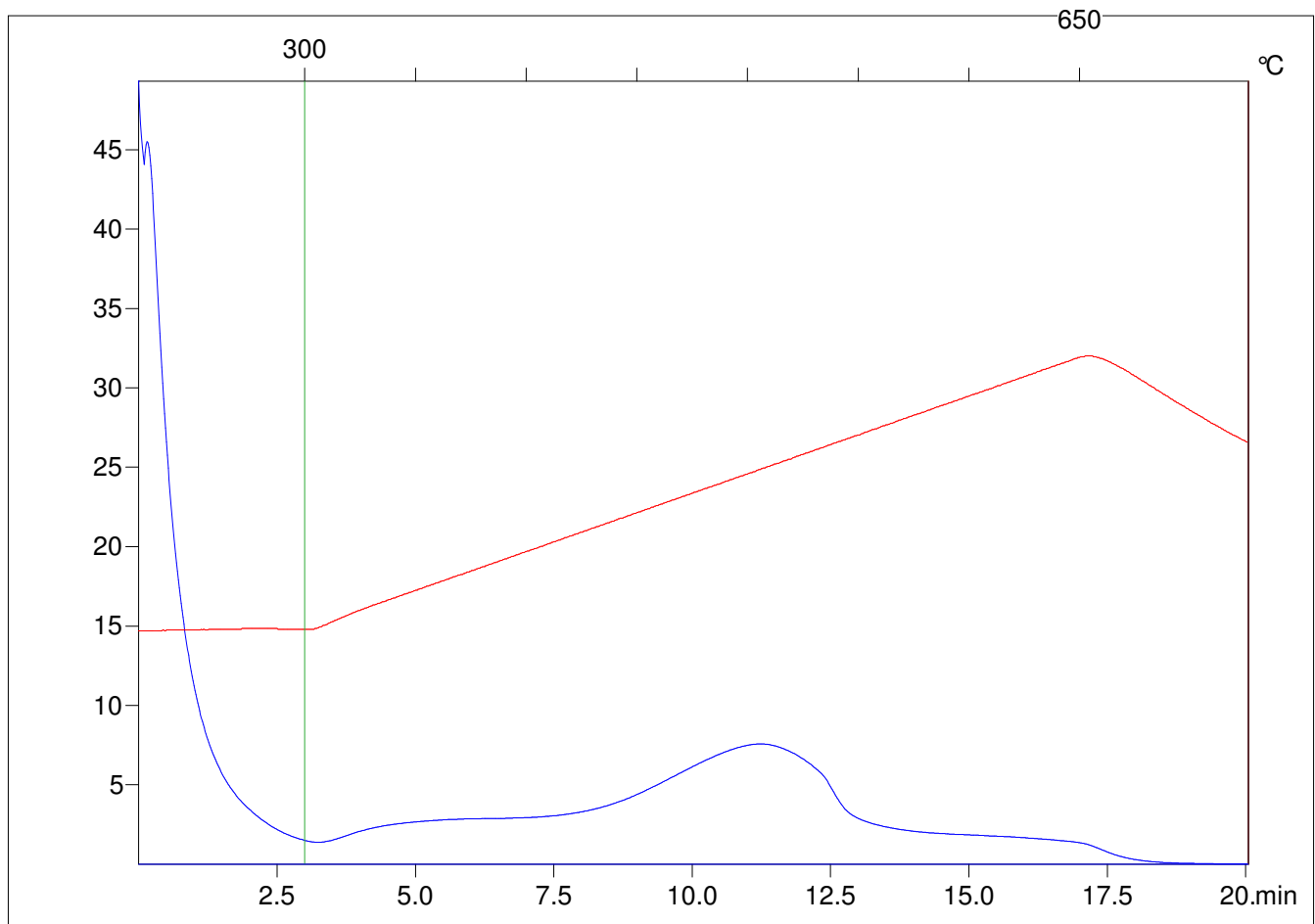
Method =Bulk Rock

Cycle=Basic

KFID(10*9)=1444

Qty =71.0

TOC=6.26



C:\VINC\PK3_1792\PK032.R00 : FID pyrolysis graphic

State Ok

Pyro Status Negative value

Oxi Status Negative value